

Resource Teachers: Learning & Behaviour Service



Term 4, 2022, Newsletter 55

Tēnā koutou katoa.

We have enjoyed working with you in 2022. What stands out is the responsiveness and quality of contributions from RTLB, practice leads, Cluster Managers, Lead Schools, and the RTLB Executive. Thanks for your collective focus on supporting schools this year, and on implementing Te Tuapapa and He Pikorua, and improving supports for Māori and Pacific learners and their whānau. We acknowledge the work of Ngā Pouwhirinakitanga and Tautai this year. Ngā mihi mahana from Jill Ford, Donna Caddie, and Elvira Edmonds

Specialist Teaching - Massey University Wendy Holley Boen, Rosina Prasad

Thank you for all of the ways you supported studiers, it has been a fantastic year! Next year, we look forward to incorporating studiers' mahi whakahirahira in the programme, continuing the Practice Leader network, and working to spotlight the great work happening in your clusters. Our new [ABOUT Specialist Teaching site](#) provides information for clusters and incoming studiers.

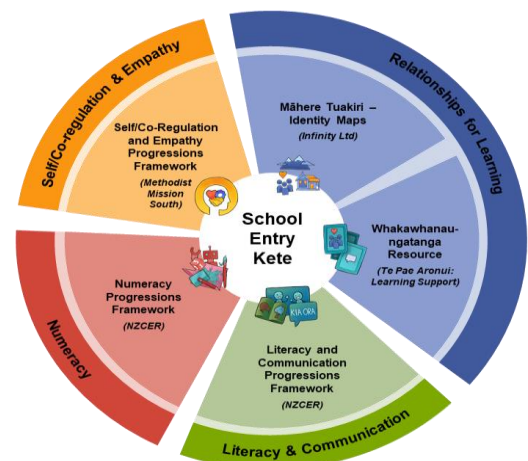
Key 2023 Dates	
<i>Year 1 Contact Workshops (Massey, Albany Campus)</i>	
Tuesday 7 February (Professional Learning Pathways)	Monday 10 July (Professional Learning Pathways)
Wednesday 8 February (Theory & Practice)	Tuesday 11 July (Theory & Practice)
<i>Year 2 Contact Workshops (Massey, Albany Campus)</i>	
Thursday 9 February (Practicum)	Wednesday 12 July (Practicum)
Friday 10 February (Community-Based Practice)	Thursday 13 July (Community-Based Practice)
<i>Masters Contact Workshops (Via Zoom)</i>	
Tuesday, 14 February (Professional Inquiry)	Wednesday, 19 July (Mentoring/Additional Areas)
<i>Mid-Semester/Mid-Year Breaks</i>	
10 - 21 April (Mid-semester break)	
26 June - 14 July (Mid-year break)	
28 August - 8 September (Mid-semester break)	

School Entry Kete

The School Entry Kete (SEK) is a suite of online teaching and learning tools aimed to support the transition of our youngest mokopuna and their whānau to school, and through their first 6-12 months of school. Focusing on four domains of Literacy & Communication, Numeracy, Self/Co-Regulation & Empathy, and Relationships for Learning, the five tools support Kaiako to uphold the Ka Hikitia foundational principles.

The project is progressing well with our various providers nearing their final stages of phase one of development and trialling. Throughout 2023 there will be a specific focus on developing a whakawhanaungatanga resource, along with the positioning of He Pikorua as the practice principles, supporting a Te Ao Māori focus on the cohesion, and practical application of the SEK in classrooms. This will form the basis for whole Kete trials and the pilot currently planned for 2024.

Additionally, we continue to work with Te Poutāhū (Curriculum) to make sure we are aligned with both Te Whāriki and the NZC refresh and progressions as we head into our next project phase of IT development. Contact us at info.sek@education.govt.nz.



Specialist Teaching Practicum Incredible Years 2023 - Akari Miyamoto

In 2022 the Ministry partnered with Auckland Uni Services and Massey University to offer the Incredible Years facilitation training as part of the Specialist Teaching practicum. This worked well, so the Incredible Years Teacher facilitation training will be offered for up to 20 RTLB again next year. In discussion with their studiers, Cluster Managers nominate RTLB for this practicum IYT training. Eligibility for this training requires CM's approval and a plan for the studier to facilitate the IY programme within 12 months of finishing their training. We will send Cluster Managers some information about this opportunity and if you have any questions contact akari.miyamoto@education.govt.nz.

The Learning Support Coordinator (LSC) Phase 3 Evaluation Report is now available online: [learning-support-coordinators-phase-3/](#).

Alternative Education Update - Janine Moss

In 2019, Cabinet approved an 'ideal state' for Alternative Education [Cabinet paper 2019](#) for an end-to-end system of support:

- to identify and respond to ākonga needs earlier
- with an ākonga centred model of supported provision, strongly integrated within the schooling system
- to better prepare ākonga for, and transitioning them into, their next best step

We are working towards this ideal state as we undertake re-contracting in 2023. Te Mahau takiwā (Ministry regions) are leading this work in their communities. Alongside this work, updated AE Guidelines detail the process of moving into, moving through, and moving on from AE. The guidelines emphasise the importance of access to learning support services and resources for ākonga in AE. The guidelines will be published on the TKI website in the New Year. If you would like a copy, please contact alt.ed@education.govt.nz.

Aotearoa New Zealand Autism Guideline 3rd Edition – He Waka Huia Takiwātanga Rau - Lisa Thompson

The third edition of [Aotearoa New Zealand Autism Guidelines | He Waka Huia Takiwātanga Rau](#) has been released and is now available online. Please share this recent version with practitioners supporting autistic learners. As it is long we are looking for ways to make sense of this in shorter, more targeted publications. The Guideline is an evidence-based synthesis of information covering the identification and diagnosis of autism and access to supports and services for autistic individuals. This release includes a supplementary paper on the effectiveness of supports for autistic students in tertiary education: [Supplementary paper](#).

Changes to strengths-based language is a major focus in the 3rd edition including use of the Māori term for autism - 'takiwātanga'. We sent Cluster Managers the revised autism terminology checklist previously.

Te Ahu o te Reo Māori - LEARN, EMBRACE, INSPIRE

Te Ahu o te Reo Māori is a fees-free programme available throughout the country, catering to all reo Māori competency levels. It aims to strengthen te reo Māori capacity and capability in the education sector to ensure we are equipped to give ākonga the best education journey possible. The programme is open to education sector staff from early learning to secondary schools, kōhanga reo to wharekura, to school leaders, teachers and support staff, as well as whānau. For more information, visit [Kauwhata Reo | Te Ahu o te Reo Māori](#)

Tautai+ Zoom Fono 2022 -Bryan Leilua and Ben Afele

Toto hau tokiga nei, aua na tupulaga e fai mai
Plant a seed today, for our future generations

Warm Pacific greetings to everyone. Thank you all for supporting our Tautai Pacific RTLB National fono in Term 3. We had over 250 participants from 32 clusters and 23 schools.

Pacific Liaisons and team members from any clusters will meet again on 2 December 2022 from 9:00-12:30pm for our Tautai+ fono. We will be sharing our successes for 2022 and begin planting our seeds for 2023. We would like to hear from any clusters who would like to share any aspect of their Pacific journey at the fono. Click [here](#) to register for the Tautai+ Zoom Fono or contact Bryan or Ben about sharing your experiences b.leilua@rtlbcluster12.school.nz ben@rtlbcluster10.school.nz

NZ RTLB Professional Learning Network - Fiona Harkness and Cathy Pole

We are happy to announce the formation of our Kaitiaki roopū and our inaugural Kairaranga roopū.

- The Kaitiaki roopū are our governing group to oversee and support implementation of our Professional Learning Network Plan (PLN). We welcome Deborah Thompson, Ngā Pouwhirinakitanga (CI 1), Marie Petersen, Cluster Manager (CI 18), and Sue McIntosh, Practice Leader, (CI 33).
- The Kairaranga roopū will join Cathy, Marie, and Sue in establishing the UDL PLG. We welcome Louise Woodhead (CI 16), Leonie Philburn (CI 17), and V Grant (CI 23).

In addition, we have been developing the website to provide a hub for communication and PLD development. Contact us at nzrtlb.pln@gmail.com. Ngā manaakitanga.

SPRING into Maths programme - Elizabeth Craker

SPRING into Maths is a systematic, easy-to-follow remedial maths programme for accelerating student achievement in number knowledge. It is being re-developed by NZCER and Wellington Uni Professional (a subsidiary of Victoria University of Wellington – Te Herenga Waka). The revised programme will be available from Term 1, 2023 and will include training from an experienced Maths facilitator and a website of resources to support delivery. Free overview sessions for this programme are being run on November 30 and December 1. For more information contact elizabeth.craker@wellingtonuni-professional.nz

We are also continuing to work alongside our colleagues to develop Aro Matawai Urunga-ā-Kura - a tool for Māori medium settings.